

QuSpot for Robustel R3000 Lite

INTEGRATED MULTI-BAND LTE OMNI ANTENNA + POE SPLITTER + PLACE TO INSTALL ROBUSTEL R3000 Lite (ALL-IN-ONE)

QuSpot all-in-one antenna for Robustel R3000 Lite router is a perfect outdoor device for mobile and fixed installations like industrial, public, CCTV, hotspots, yachts, boats, campers, RV etc. It has embedded omni LTE antenna. If you use R3000 Lite with QuSpot antenna, you get an integrated complete solution with embedded router and multi band antennas in one enclosure.

The set contains a PoE splitter, allowing you to split data and power from a single Ethernet cable and maintain gigabit transfer speeds while protecting the LAN port from damage caused by overvoltage, short circuit or improper connection.

4G
LTE**2x2 MIMO**
694-2700MHz
4 dBi
**OMNI
DIRECTIONAL**
IP 67
-40° TO +80°

OUTDOOR ANTENNA WORKS IN ANY
WEATHER CONDITIONS, IP67



GALVANIZED STEEL, WALL OR POLE
MOUNTING BRACKET



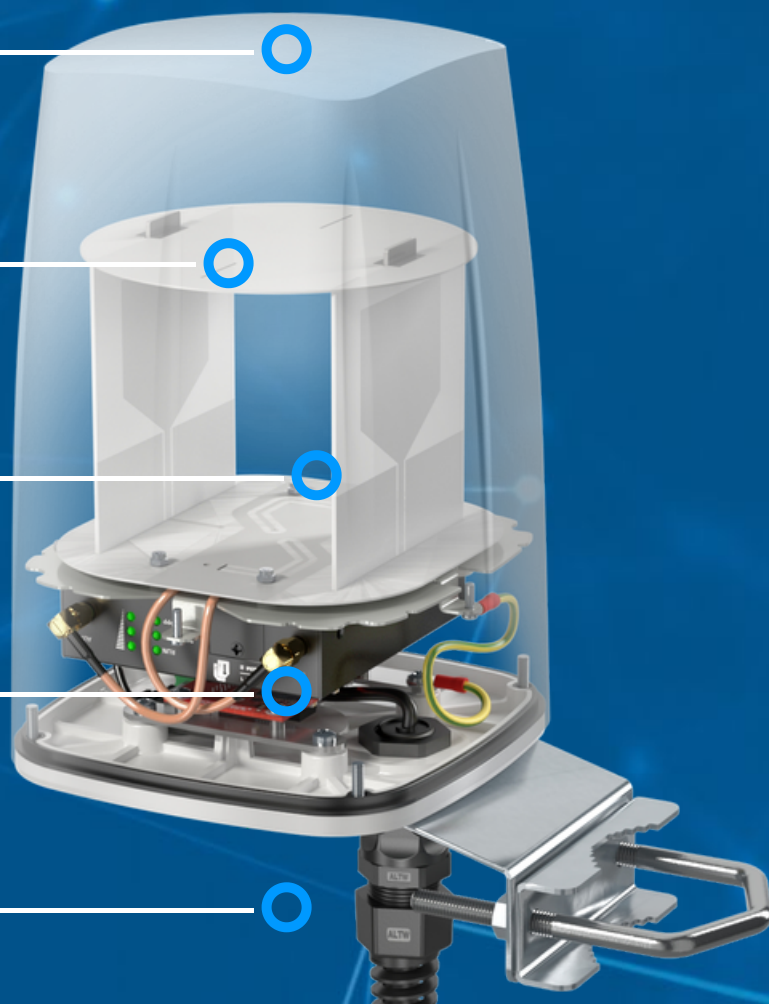
ANTENNA PERFECTLY MATCHED WITH
THE ROBUSTEL R3000 LITE



ALL ANTENNAS AND ROBUSTEL
ROUTER INTEGRATED IN ONE
ENCLOSURE



MADE IN **EUROPE**



LTE ANTENNA SPECIFICATION

FREQUENCY	694 - 960 MHz 1.7 - 2.2 GHz 2.2 - 2.7 GHz
GAIN	694 - 960 MHz : 2 dBi 1.7 - 2.2 GHz : 2 dBi 2.2 - 2.7 GHz : 4 dBi
SUPPORTED LTE/5G BANDS	1, 2, 3, 4, 5, 6, 7, 8, 9, 10, 12, 13, 14, 17, 18, 19, 20, 23, 25, 26, 27, 28, 29, 30, 33, 34, 35, 36, 37, 38, 39, 40, 41, 44, 53, 59, 62, 65, 66, 67, 68, 69, 85, n80, n81, n82, n83, n84, n86, n89, n90, n95
VSWR	<1.60, max <2.00
BEAMWIDTH	360°/35° ±5°
POLARIZATION	Vertical
IMPEDANCE	50 Ω

MECHANICAL SPECIFICATION

MATERIALS	ABS, aluminum, PTFE
CONNECTOR TYPE	RJ45
INGRESS PROTECTION	IP67
DIMENSIONS	160 x 160 x 240 mm 6.3 x 6.3 x 9.45 inch
WEIGHT	1.5 kg 3.31 lbs
OPERATING TEMPERATURE	From -40°C to 80°C From -40°F to 176°F
MAST DIAMETER	40-60 mm 1.57-2.36 inch

FREQUENCY BANDS

LTE / 4G GSM	<div>56812131417</div> <div>617 MHz<div>18192026272829</div><div>44676885n81n82n83</div><div>n89</div>960 MHz</div>
LTE / 4G UMTS	<div>123491025</div> <div>1710 MHz<div>33343536373959</div><div>62n80n84n86n95</div>2170 MHz</div>

LTE / 4G WCS DARS

2300
MHz

30

40

2400
MHz

LTE / 4G

2400
MHz

7

38

41

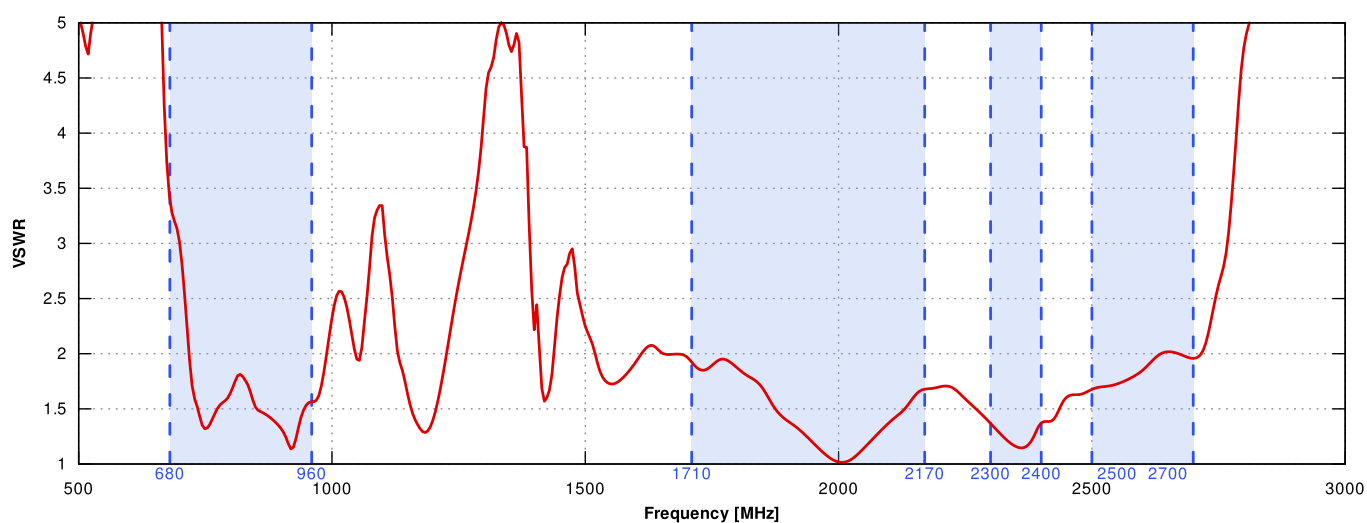
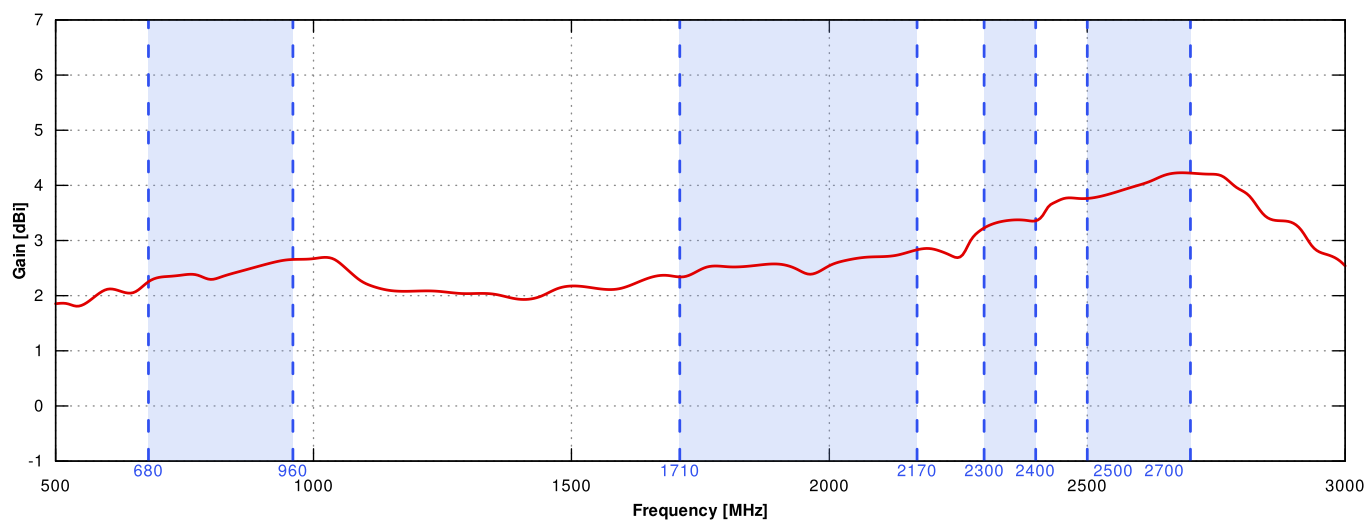
53

69

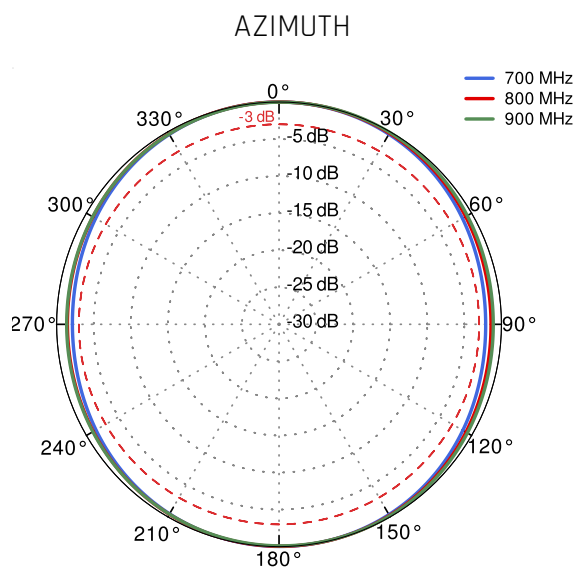
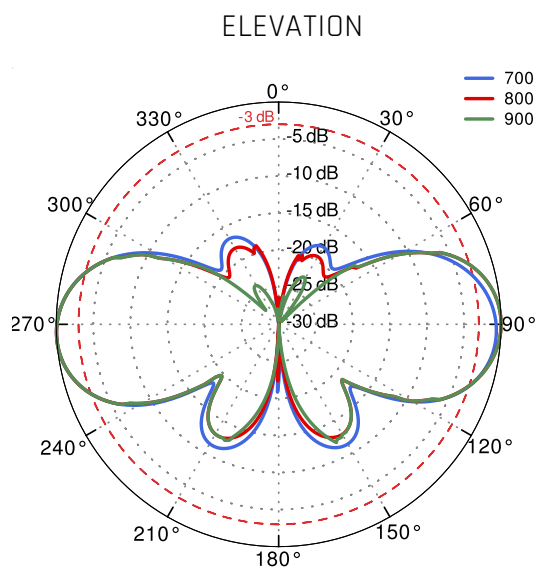
n90

2700
MHz

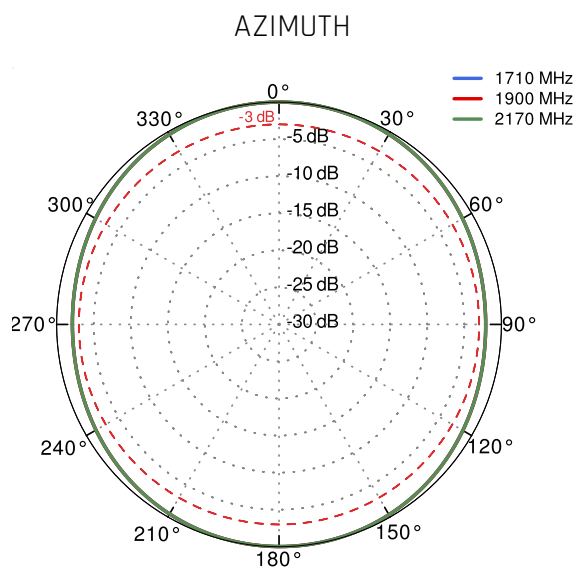
PLOTS

VSWR

Gain


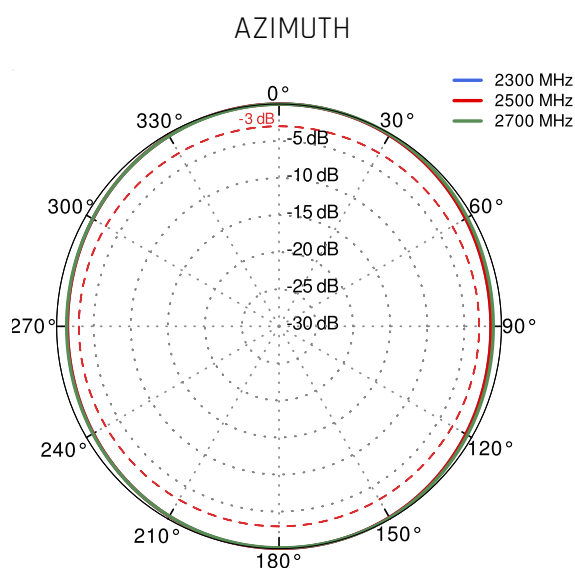
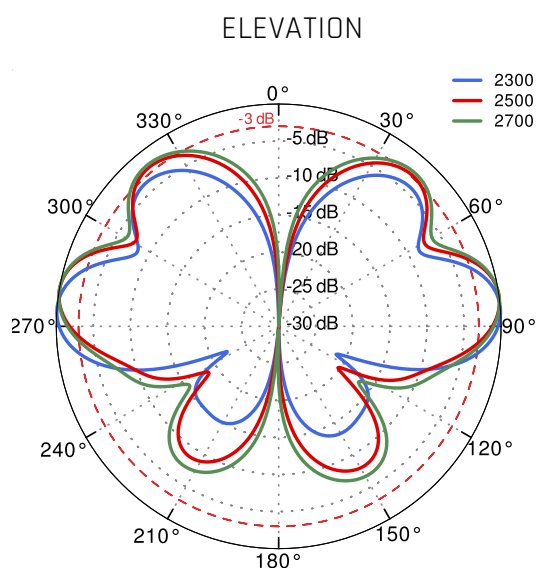
From 700MHz to 900MHz



From 1.71GHz to 2.17GHz



From 2.3GHz to 2.7GHz



DIMENSIONS

