

# QuSpot for Robustel R5010

## INTEGRATED MULTI-BAND LTE & 5G OMNI ANTENNA + PLACE TO INSTALL ROBUSTEL R5010 (ALL-IN-ONE)

QuSpot for Robustel R5010 is an outdoor antenna designed to provide reliable wireless connectivity in a variety of environments. This product is an all in one solution that integrates a high gain omnidirectional 5G antennas with R5010 into a single IP67 enclosure. Such integration allows implementation of new outdoor R5010 solutions. QuSpot for R5010 is an ideal solution for outdoor wireless connectivity in moving applications such as transportation, yachting, boats and camping but also city centres with high signal density.

**5G**  
**617-6000MHz**  
**5 dBi**  
**OMNI  
DIRECTIONAL**  
**IP 67**

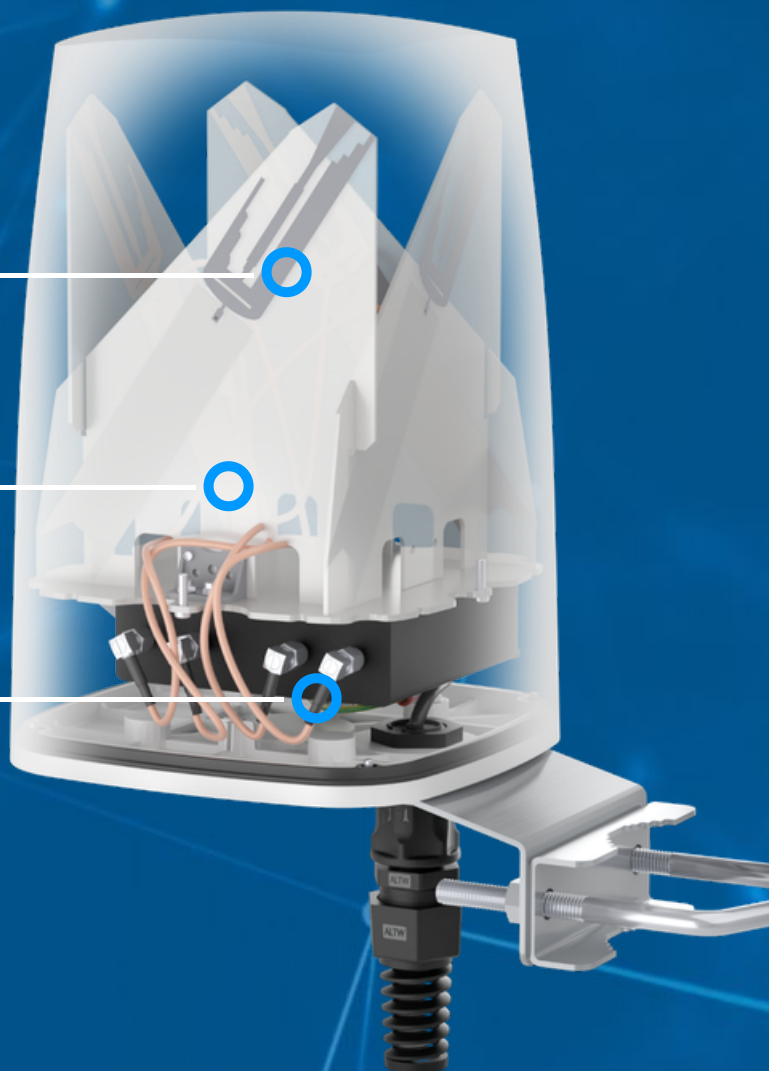
OUTDOOR ANTENNA WORKS IN **ANY  
WEATHER CONDITIONS**, IP67



ANTENNA **PERFECTLY MATCHED** WITH  
THE ROUTER



MADE IN **EUROPE**



## 5G ANTENNA SPECIFICATION

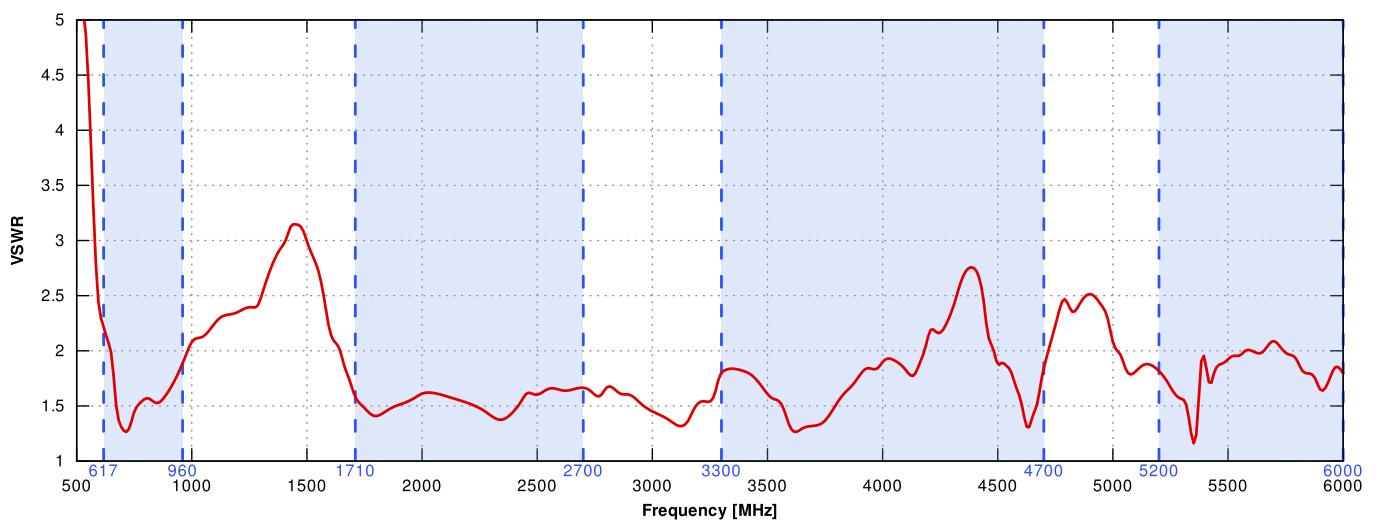
FREQUENCY	617 - 960 MHz 1.7 - 2.7 GHz 3.3 - 4.7 GHz 5.2 - 6.0 GHz
SUPPORTED LTE BANDS	1, 2, 3, 4, 5, 7, 8, 9, 10, 12, 13, 14, 17, 18, 19, 20, 22, 25, 26, 27, 28, 29, 30, 33, 34, 35, 36, 37, 38, 39, 40, 41, 42, 43, 44, 47, 48, 49, 52, 53, 65, 66, 67, 68, 69, 71, 85, 103, 106
SUPPORTED 5G BANDS	n1, n2, n3, n5, n7, n8, n12, n13, n14, n18, n20, n25, n26, n28, n29, n30, n34, n38, n39, n40, n41, n47, n48, n53, n65, n66, n67, n71, n77, n78, n80, n81, n82, n83, n84, n85, n86, n89, n90, n95, n97, n98, n100, n101, n256
GAIN	617 - 960 MHz : 3 dBi 1.7 - 2.2 GHz : 4 dBi 3.3 - 4.7 GHz : 4.5 dBi 5.2 - 6.0 GHz : 2.5 dBi
VSWR	<1.80, max <2.00
BEAMWIDTH	360°/35° ±5°
POLARIZATION	Vertical
IMPEDANCE	50 $\Omega$

## MECHANICAL SPECIFICATION

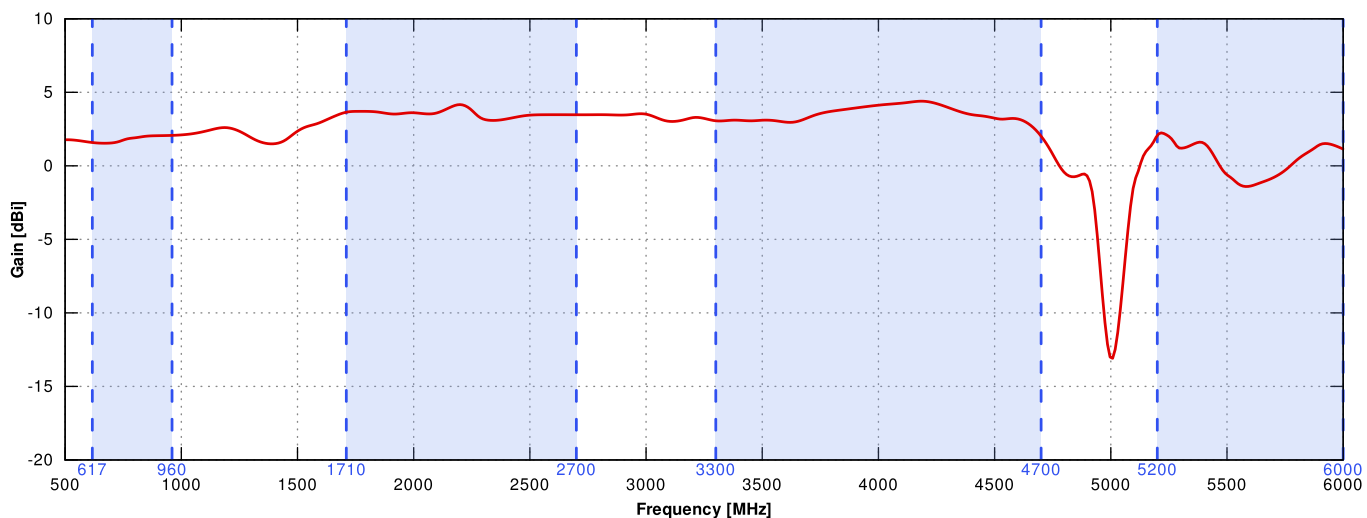
MATERIALS	ABS, aluminum, PTFE
CONNECTOR TYPE	RJ45
INGRESS PROTECTION	IP67
DIMENSIONS	160 x 160 x 240 mm 6.3 x 6.3 x 9.45 inch
WEIGHT	1.5 kg 3.31 lbs
OPERATING TEMPERATURE	From -40°C to 75°C From -40°F to 167°F
MAST DIAMETER	40-60 mm 1.57-2.36 inch

## PLOTS

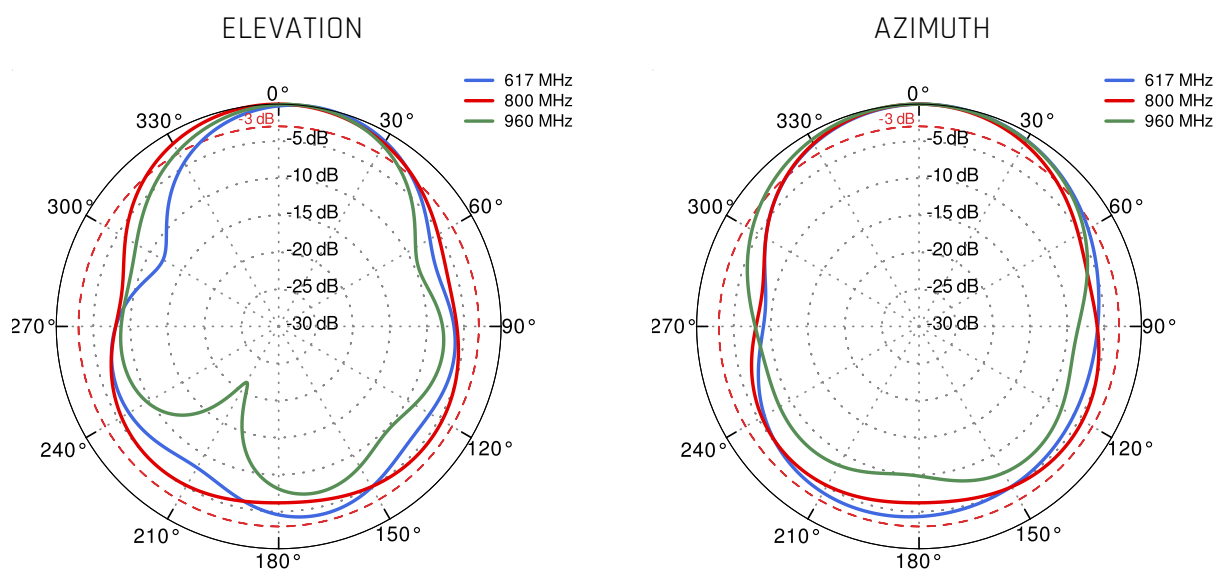
VSWR for 5G/LTE antenna



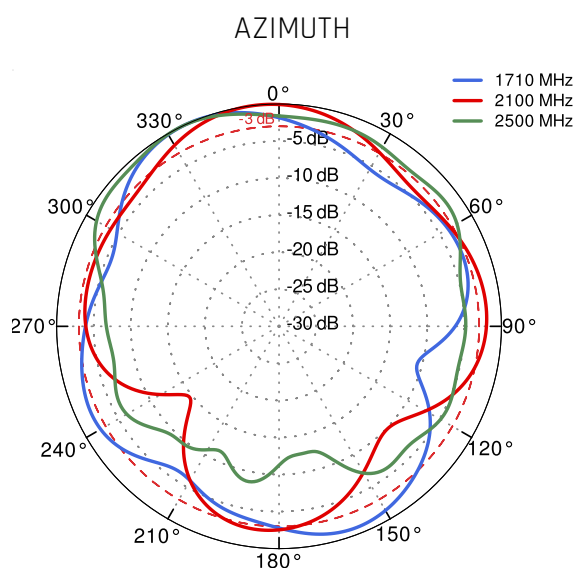
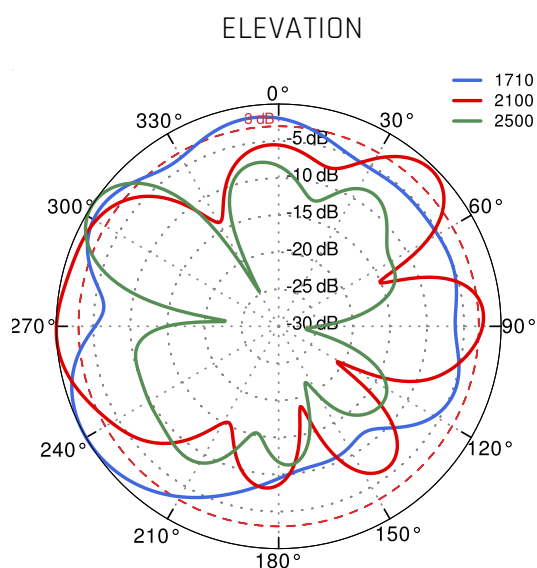
## Gain for 5G/LTE antenna



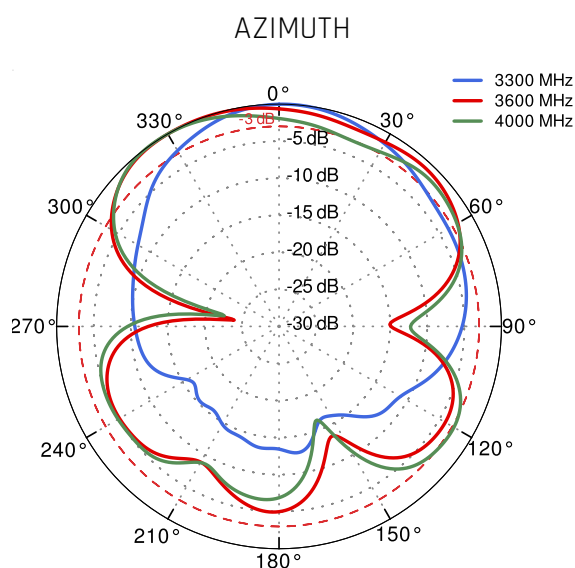
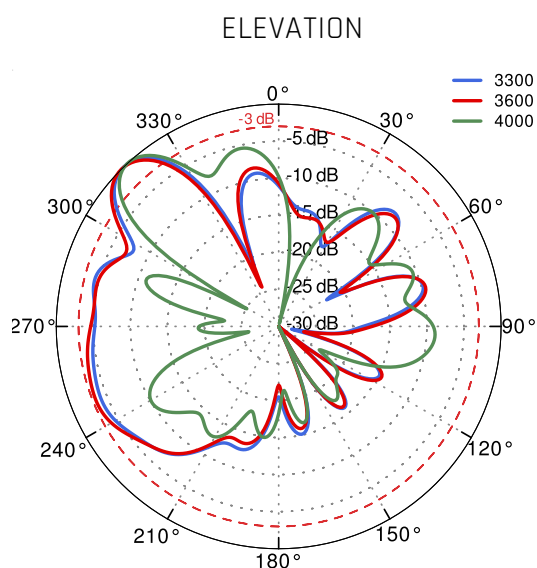
## 5G/LTE from 617MHz to 960MHz



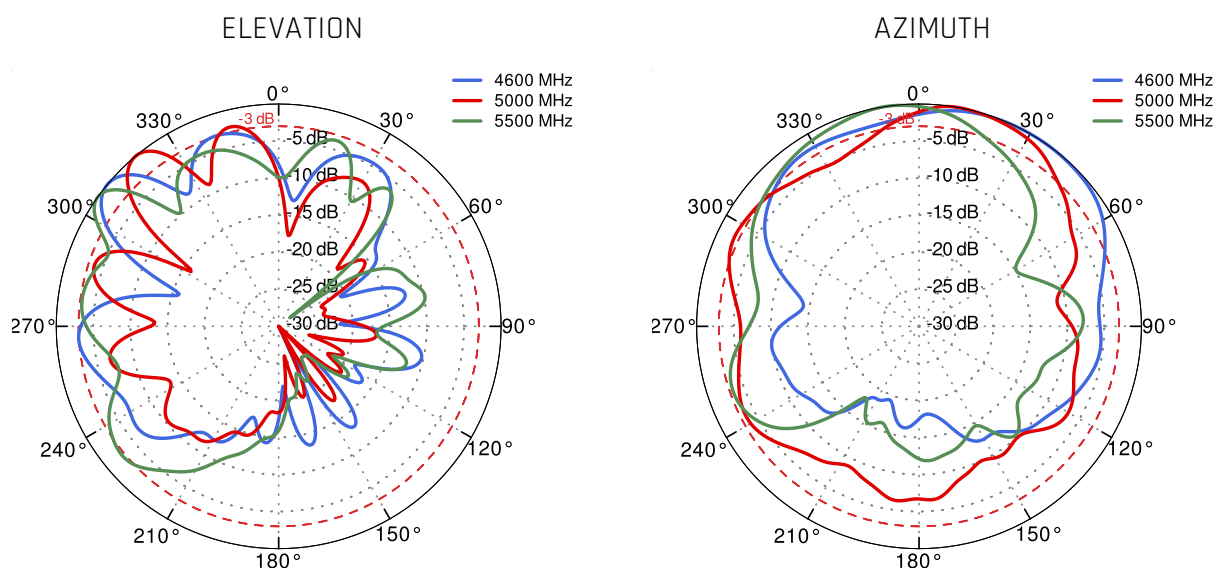
## 5G/LTE from 1.71GHz to 2.5GHz



## 5G/LTE from 3.3GHz to 4.2GHz



5G/LTE from 4.6GHz to 5.5GHz



## DIMENSIONS

